

The Met Gala

By Patti Carey of Patti's Patchwork
for *Quilt Block Mania* July 2025



Finished Size: 12" square (12½" edge-to-edge)

Skill level: Intermediate

Fabrics used: Toscana suede-look texture and Canvas texture by Northcott
Label pieces as indicated in the cutting chart for ease of construction.

Fabric	Cutting Instructions
A – dress skirt (#9020-21 pinky swear)	◊ Use for odd-numbered sections in Paper-pieced skirt section
B – contrast (#9030-28 hot pink)	◊ Cut 1 piece each using Template 1 & 4, and 2 pieces using Template 2. ◊ Use for even-numbered sections in Paper-pieced skirt section
C – background (#9030-10 whitewash)	◊ Cut 1 piece using Template 3*

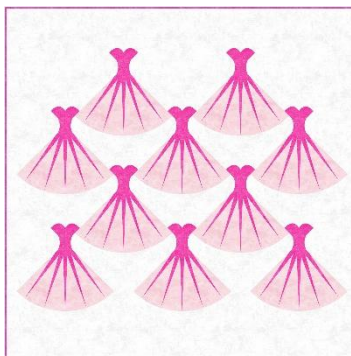
*** Join the (3) Template 3 sections prior to cutting Template 3 from Fabric C**

Previous foundation paper-piecing knowledge is recommended. If you are unfamiliar with foundation paper-piecing, there is a great tutorial by The Weekend Quilter at <https://the-weekendquilter.com/blogs/blog/foundations-of-foundation-paper-piecing>

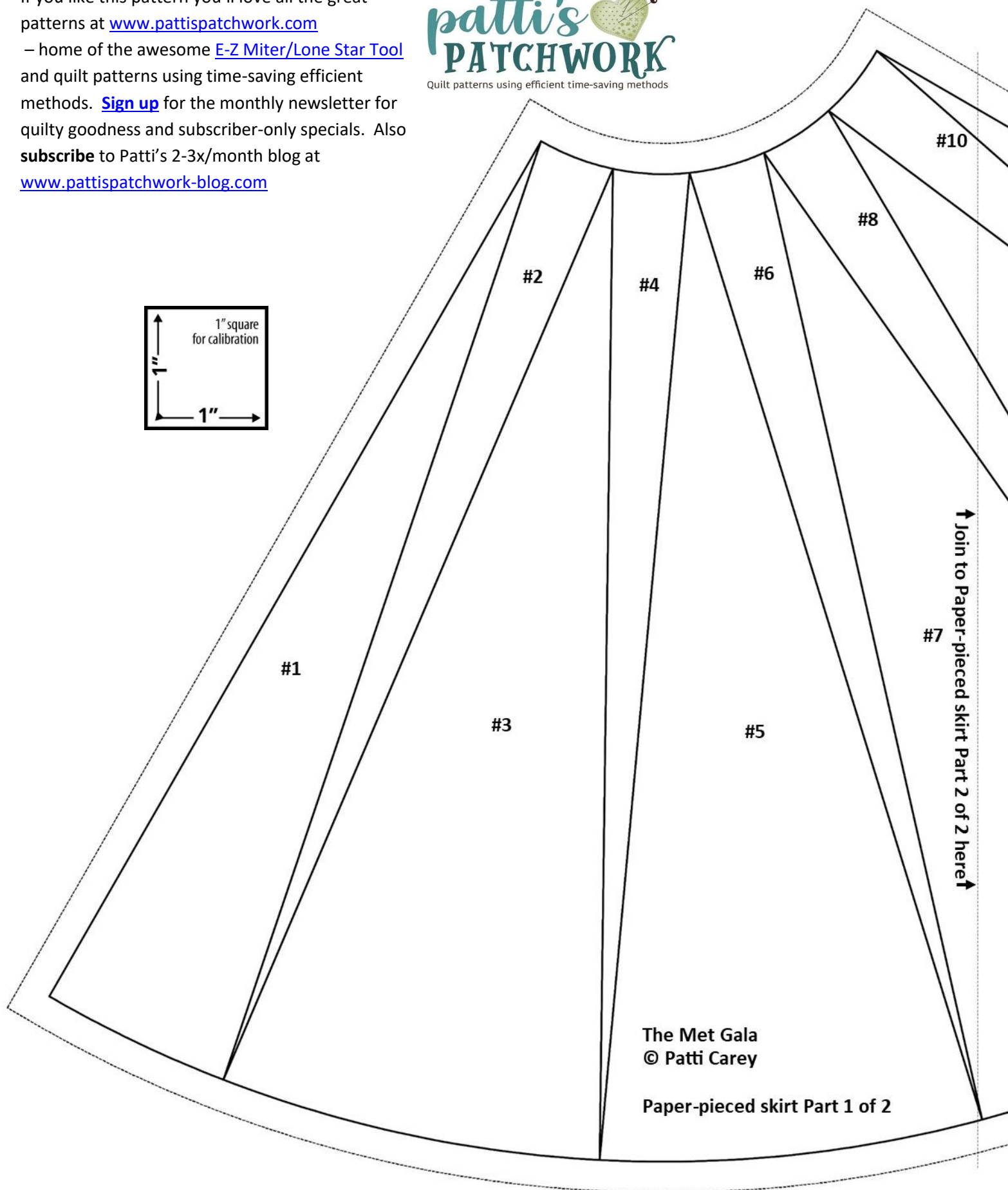
General Piecing: All seams are ¼" unless noted.

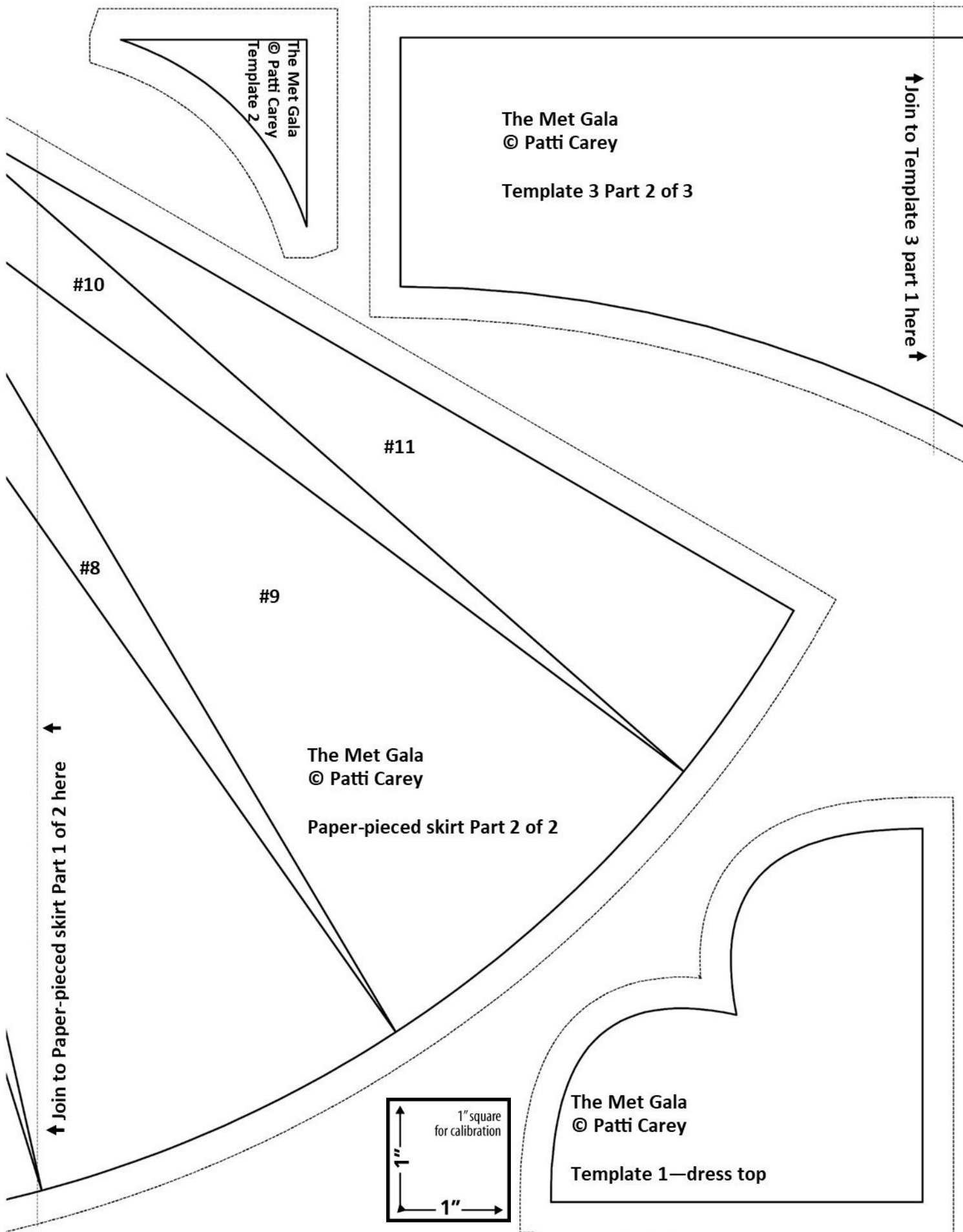
1. Join the 2 Paper-pieced skirt sections and trim ⅛" beyond outer line on all edges. Starting with #1 section, fill the section with Fabric A. Use Fabric B for the #2 section, then A for #3, then B for #4 and so on, using A for #5, #7, #9 and #11 and B for #6, #8 and #10. Trim skirt section along outer edges but do not remove paper.
2. Sew the curved edge of the Template 3 Fabric C piece to the outer curved edge of the skirt section, matching mid-points and keeping edges aligned. **Tip:** Sew with C on top.
3. Press under ¼" on curved edge of Template 4 Fabric A piece. Lay pressed edge on inner curved edge of skirt section, aligning ends and having pressed edge along seam line of skirt section. Invisibly machine-stitch in place.
4. Press under ¼" on curved edge of Template 2 pieces. Pin in opposite corners of background piece, aligning edges with edge of C. Baste ⅛" from raw outer edges and invisibly machine-stitch curved edge in place.
5. Press under ¼" on curved edges of Template 1 Fabric A piece, clipping seam allowance at inner point to allow pressed-under edge to lay flat. Pin in remaining corner of background piece, aligning straight edges with edge of C. Baste ⅛" from raw outer edges and invisibly machine-stitch curved edge in place.

The magic of this block take place when several blocks are set in an on-point layout – ballgowns appear!
Choose a variety of colors for the ballgowns.



If you like this pattern you'll love all the great patterns at www.pattispatchwork.com – home of the awesome [E-Z Miter/Lone Star Tool](#) and quilt patterns using time-saving efficient methods. [Sign up](#) for the monthly newsletter for quilty goodness and subscriber-only specials. Also **subscribe** to Patti's 2-3x/month blog at www.pattispatchwork-blog.com





↑ Join to Template 3 part 2 here ↑

The Met Gala
© Patti Carey

Template 3—background—Part 1 of 3

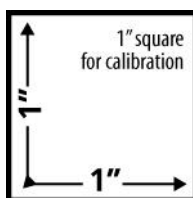
The Met Gala
© Patti Carey

Template 4—skirt top

The Met Gala
© Patti Carey

Template 3—
Part 3 of 3

↑ Join to Template 3 part 1 here ↑



↓ Join to Template 3 part 3 here ↓