

# Beer Pong

By Patti Carey of Patti's Patchwork  
for *Quilt Block Mania* March 2024



**Finished Size:** 12" square (12½" edge-to-edge)

**Skill level:** Confident beginner

**Fabrics used:** Toscana suede-look texture by Northcott

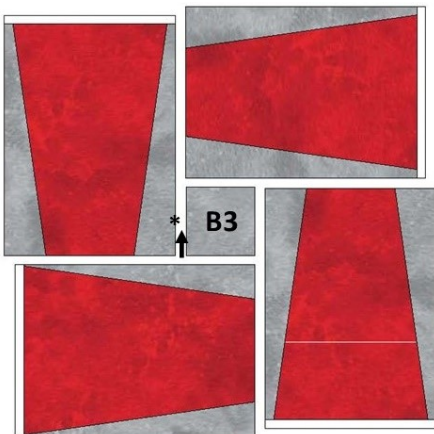
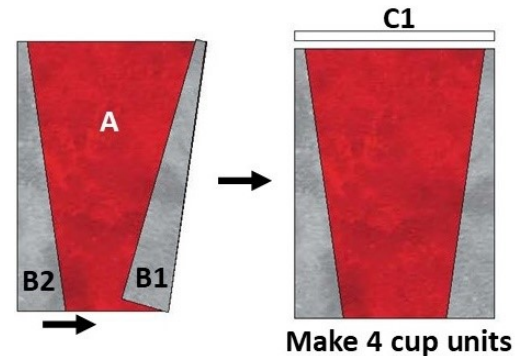
**Tip:** Label pieces as indicated ( ) for ease of piecing.

Fabric	Cutting Instructions
<b>A</b> –red (#9020-24 cardinal)	◇ Cut 4 pieces using Template 1 ( <b>A</b> )
<b>B</b> – gray background (#9020-93 going grey)	◇ Cut 4 pieces using Template 2 ( <b>B1</b> ), 4 pieces using Template 3 ( <b>B2</b> ) and (1) 2½" square ( <b>B3</b> ).
<b>C</b> – white (#9020-10 picket fence)	◇ Cut (4) 5½" x ¾" pieces ( <b>C1</b> ) and 1 piece using Template 4 ( <b>C2</b> )

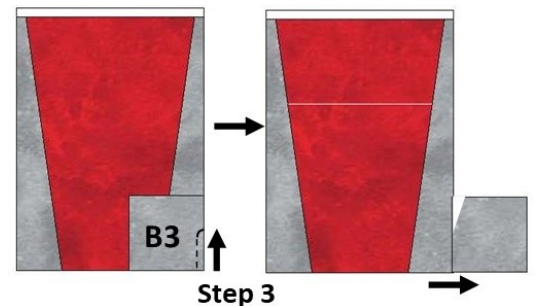
**Piecing:** All seams are ¼". Press toward darker fabric unless indicated.

**1. Cup units:** Select an A piece, a B1 piece, a B2 piece and a C1 piece. Referring to diagram at right, sew B1 to one long (right) edge of A and B2 to remaining long (left) edge of A; press seam toward A.

**2.** Sew C1 to top end of B1/A/B2 unit, pressing seam toward C. Cup unit should measure 5½" x 7½". Repeat to make a total of 4 cups.

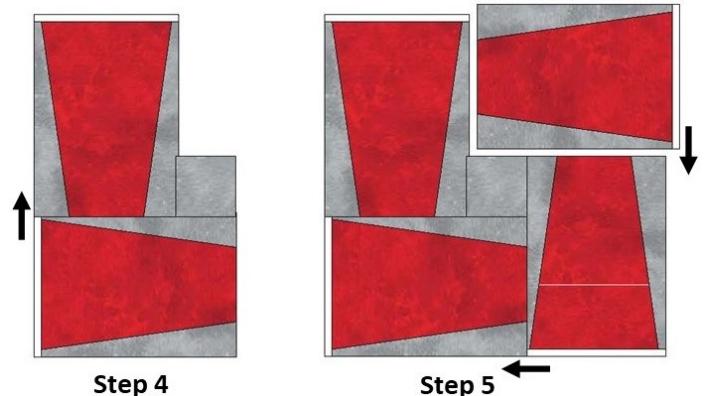


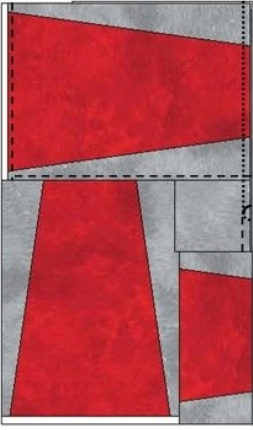
**3.** Arrange cup units as shown, placing B3 in the center space. Lay B3 face down in bottom right corner of the top left cup unit and sew only the first 1½" of the vertical seam (from edge to \* as shown by arrow and dashed line), then sew diagonally off the edge as shown at right; finger-press toward B3. **Tip:** Sew with the cup unit on top and B3 on the bottom.



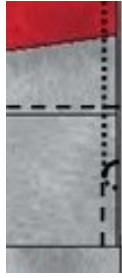
**4.** Sew the bottom left cup unit to the cup/B3 edge, finger-pressing seam toward B3 section.

**5.** Continue around block, adding the bottom right cup unit then the top right cup unit.



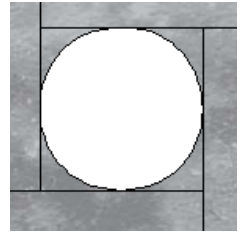


Step 6



6. Sew the top right cup unit to the top left cup unit to complete the partial seam from step 3 – sew from edge of block to the partial seam and curve off once you are past the previous curve (see dotted line).

7. Turn raw edge of C2 under along  $\frac{1}{4}$ " seam line. Hand- or machine applique to center of block. Block should measure  $12\frac{1}{2}$ " square.



If you like this pattern you'll love all the great patterns at [www.pattispatchwork.com](http://www.pattispatchwork.com) – home of the awesome [E-Z Miter/Lone Star Tool](#) and quilt patterns using time-saving efficient methods. [Sign up](#) for the monthly newsletter for quilty goodness and subscriber-only specials. Also **subscribe** to Patti's 2-3x/month blog at [www.pattispatchwork-blog.com](http://www.pattispatchwork-blog.com) for quilting tips and tasty recipes. Join me on the [Alaska Quilters Cruise with Watergirl Quilt Co](#) Sept 8 - 15, 2024 - reserve your spot now 😊



